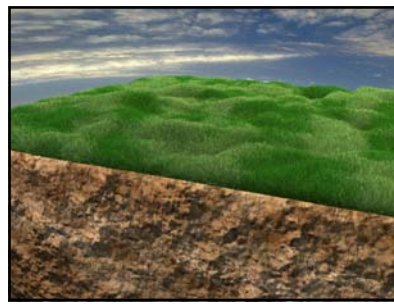


Installation Excellence

Jaime Sanchez, President and Founder of **Appian Way Paver Systems**, has been installing and supervising interlocking paver systems for over 20 years. He has trained, inspected, and reviewed installations in excess of 3,000,000 square feet in that time. **Appian Way Paver Systems** strives to meet client expectations and looks forward to serving you. We love referrals and also welcome the opportunity to serve your friends and family.



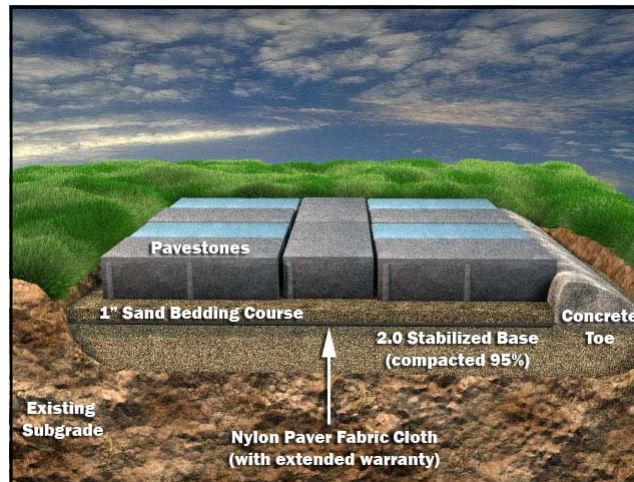
You'll love your new homescape, addition!



Pre-excavated site



7" to 12" soil excavation depending on application



Final Paving System, Built to Last!

Appian Way Paver Systems

19515 Jackson Brook Way
Cypress, Texas 77429

Phone: 281.758.0199

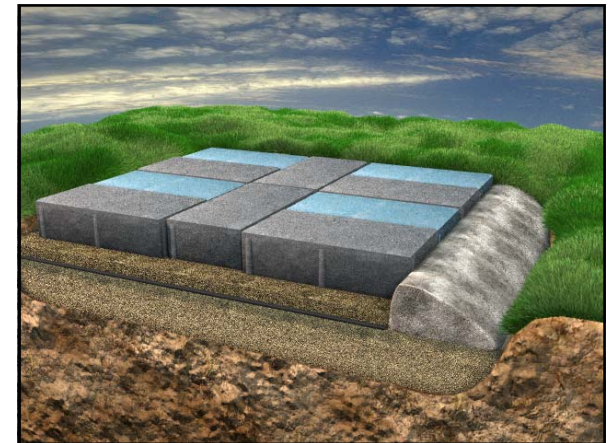
Fax: 281.398.0373

E-mail: info@appianwaypavers.com

Appian Way Paver Systems



*Professionally Designing
and Installing
Interlocking Pavestone®
Driveways, Patios,*



"A History of Installation Excellence"

Call Today! 281.758.0199

www.appianwaypavers.com

Why an Appian Way Paver Systems Installation?

Many world travelers have visited **The Appian Way** in Europe. The **Roman Empire** has been credited with many advances in civilization. The road systems were unique in that they were



Stellar Driveways

built with interlocking stones over various types of terrain and across long distances, linking towns and cities along the way. Today, interlocking pavers are man-made, engineered to exacting standards, meeting colorization and composition requirements, and serving a variety of applications from industrial to residential. Many of our homeowner clients are looking for a product that will add value to their property, increase their enjoyment of their domain, and present long-term functionality. We believe that no other product gives you the peace of mind that an **Appian Way Paver Systems** installation can offer. The craft is in the details and we enjoy installing each project and know you will like your addition when complete.

Planning Your Project

Planning your project can be fun and easy. We have created a functional website that will enable you to pick your shapes and colors for the main field of your deck and your border. Designing a walkway or patio can be as simple as sketching it on graph paper, painting it on the ground with landscape spray paint, or laying it out with a water hose. If you are uncomfortable with this process, we have designers who will be happy to create a design for you that maximizes the best of use your yard and enhances your families' lifestyle activity. We can also help you with product sample review. Please let us know how we can best help you to achieve your goals and meet your expectations.

Value Estimations

Our installations add value to your home and are basically charged by the square foot which includes labor required and other



Patio Exteriors

extra details that make for a better looking project. A square patio is priced less per square foot; for example, over a contour designed patio. The cutting detail required to make a free-shaped deck aesthetically pleasing may add a more hours of labor, but may be worth the it. Depending on the size of the job, this customized cost may be negligible. We also help you stay within your budget and recommend enhancements that may save you money in the future. We have found that it is better to discuss your plans in order to plan for project upgrades, maintenance goals, home resale plans, and site specific nuances (i.e., slopes, drainage, pets, etc.).

You will find that we work hard to keep our overhead low which keeps our pricing competitive and affordable. We also realize that paver installations are not rocket science, but paving science is



Landscaped Walls

truly fascinating. The more you want to discover about paving, you will be surprised at the amount of engineering study the industry has undergone to ensure that people are informed about the value of interlocking paving. The average home owner has yet to realize the benefits of interlocking pavers in our high clay-content soils, which wreak havoc on other slab-like decking surfaces. Sand and clay content soils expand and contract with heat and rain. Slab-type surfaces, over time, succumb to these unyielding geo-forces and crack and crumble as a result. Interlocking pavers are designed to flex, allowing for adjustments in the terrain. This flexibility represents a wise option as repairs are more easily done and the original installation can be maintained to look like new if the situation requires, with minimal expense, destruction, and impact to the environment.

AppianWay Paver Systems

19515 Jackson Brook Way
Cypress, Texas 77429
Phone: 281.758.0199
Fax: 281.398.0373
E-mail:
info@appianwaypavers.com